



RFind and RTLS

Gothenburg, Sweden

Short intro of RFind



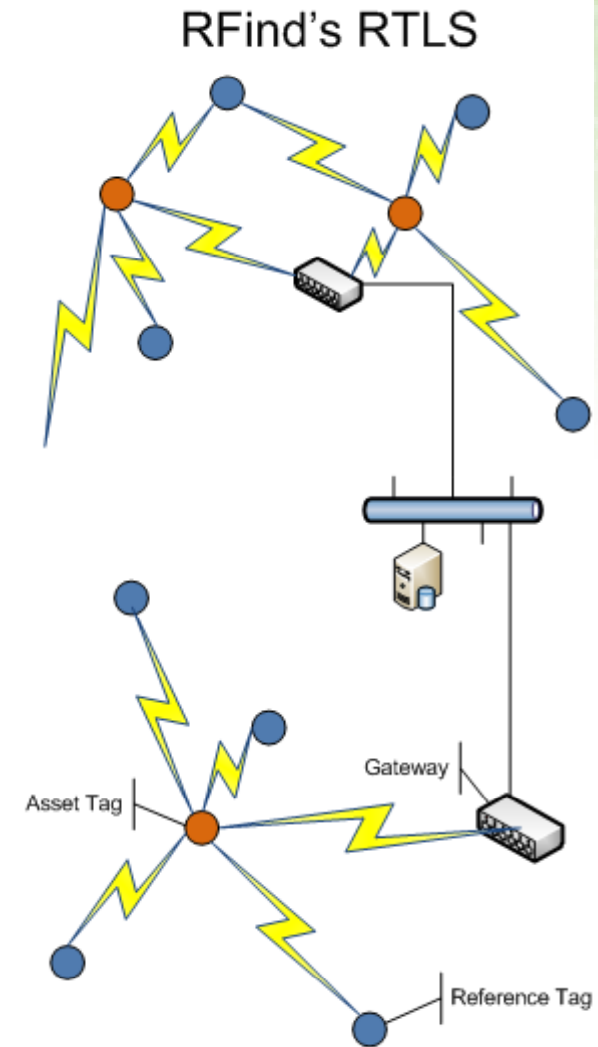
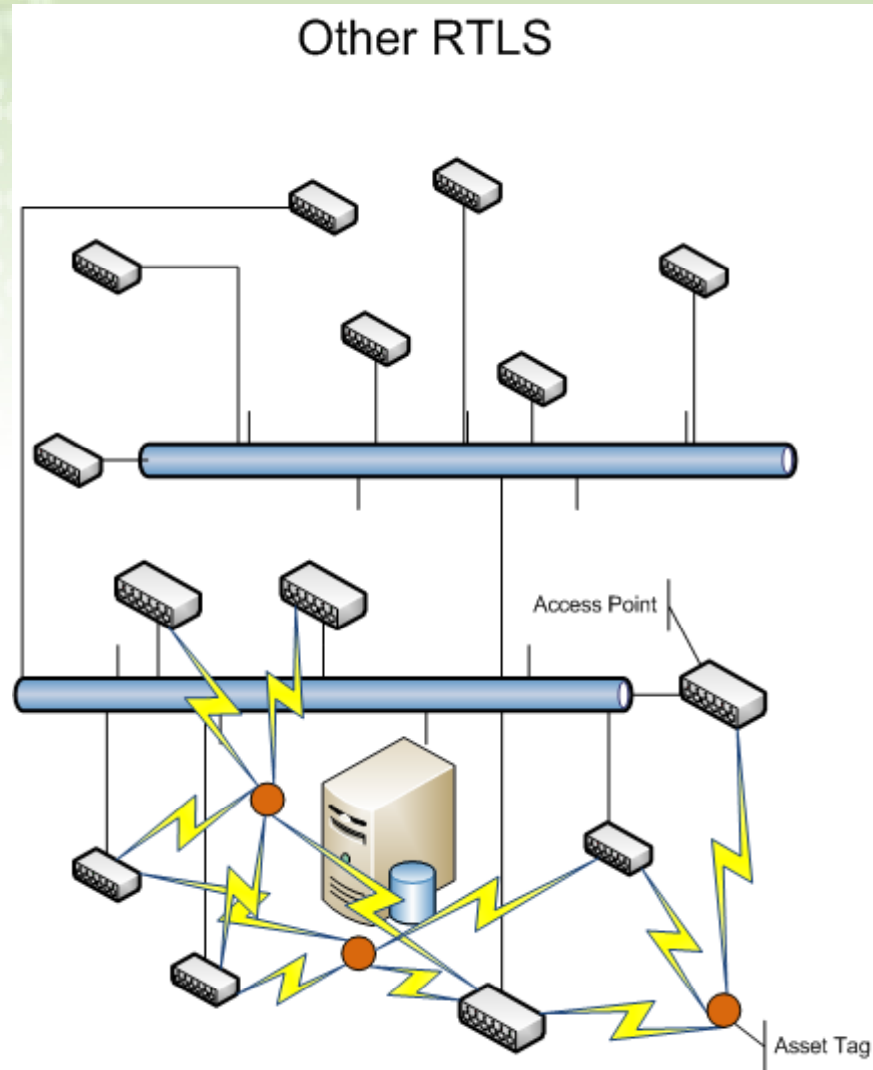
- Based in Kelowna, British Columbia, Canada
- Small solutions driven organization focused on providing customers with thought leadership
- Experts in active RFID locating and process improvement
- Primary focuses:
 - Heavy manufacturing: Automotive
 - Municipalities and transit
 - Military

The Challenge



- Most locating systems come from a singular point of view (paradigm)
 - Architecture
 - Topology
 - Method
 - Methodology
 - Packaging
 - Approach

Comparison



The Solution

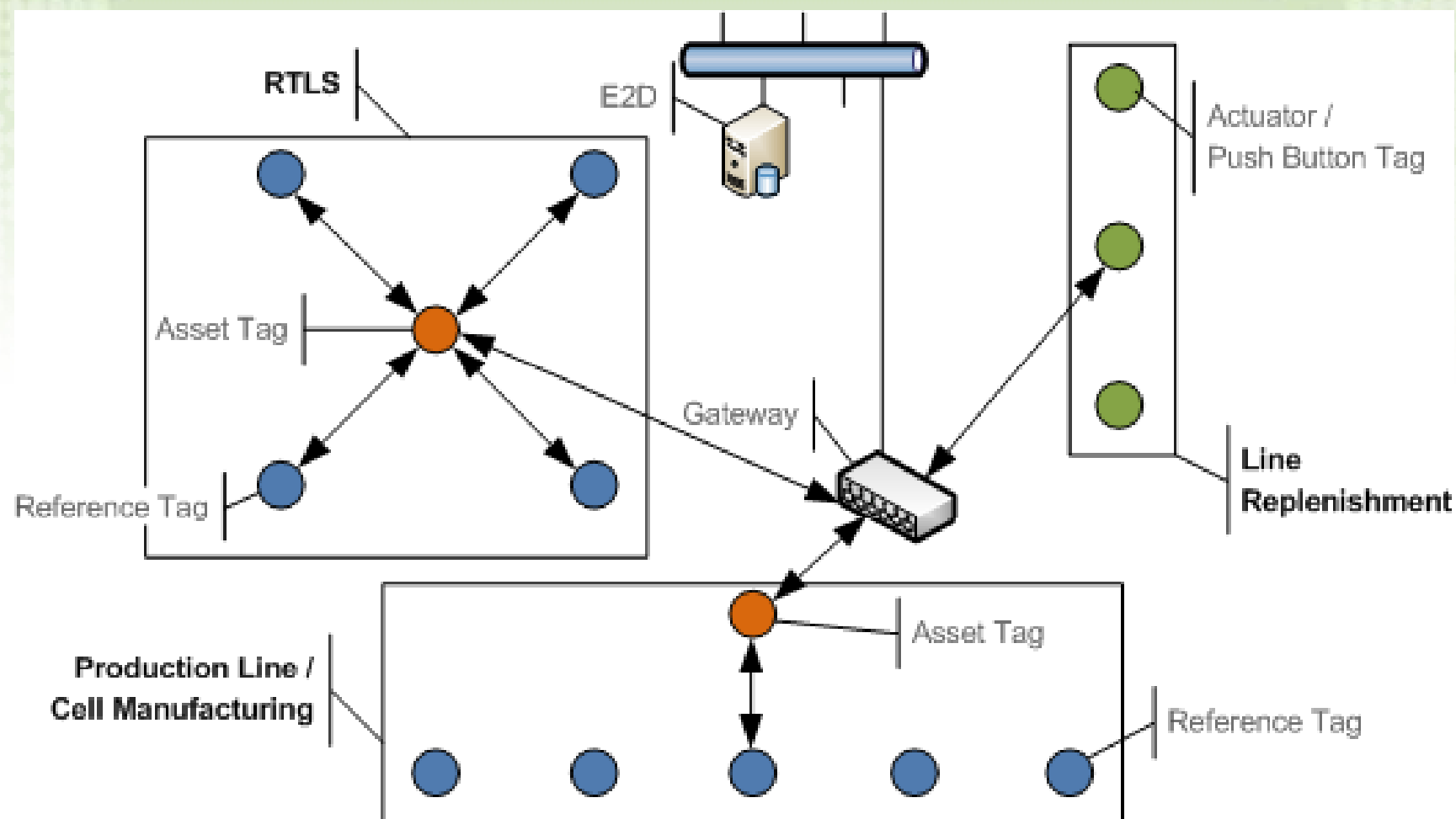


- A set of tools that allow multiple paradigms to be used in problem solving
 - Various architecture options
 - Numerous topologies
 - Several methods
 - Methodologies that fit the environment
 - Options for packaging of components
 - Approaches to match the challenge

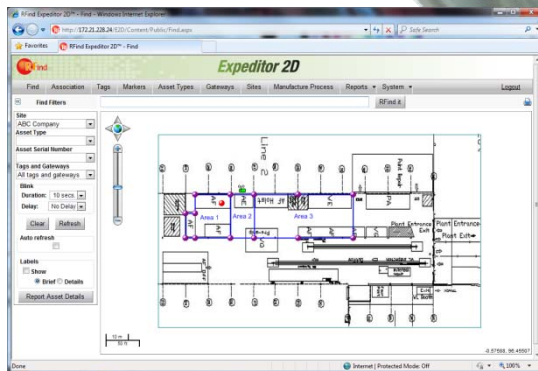
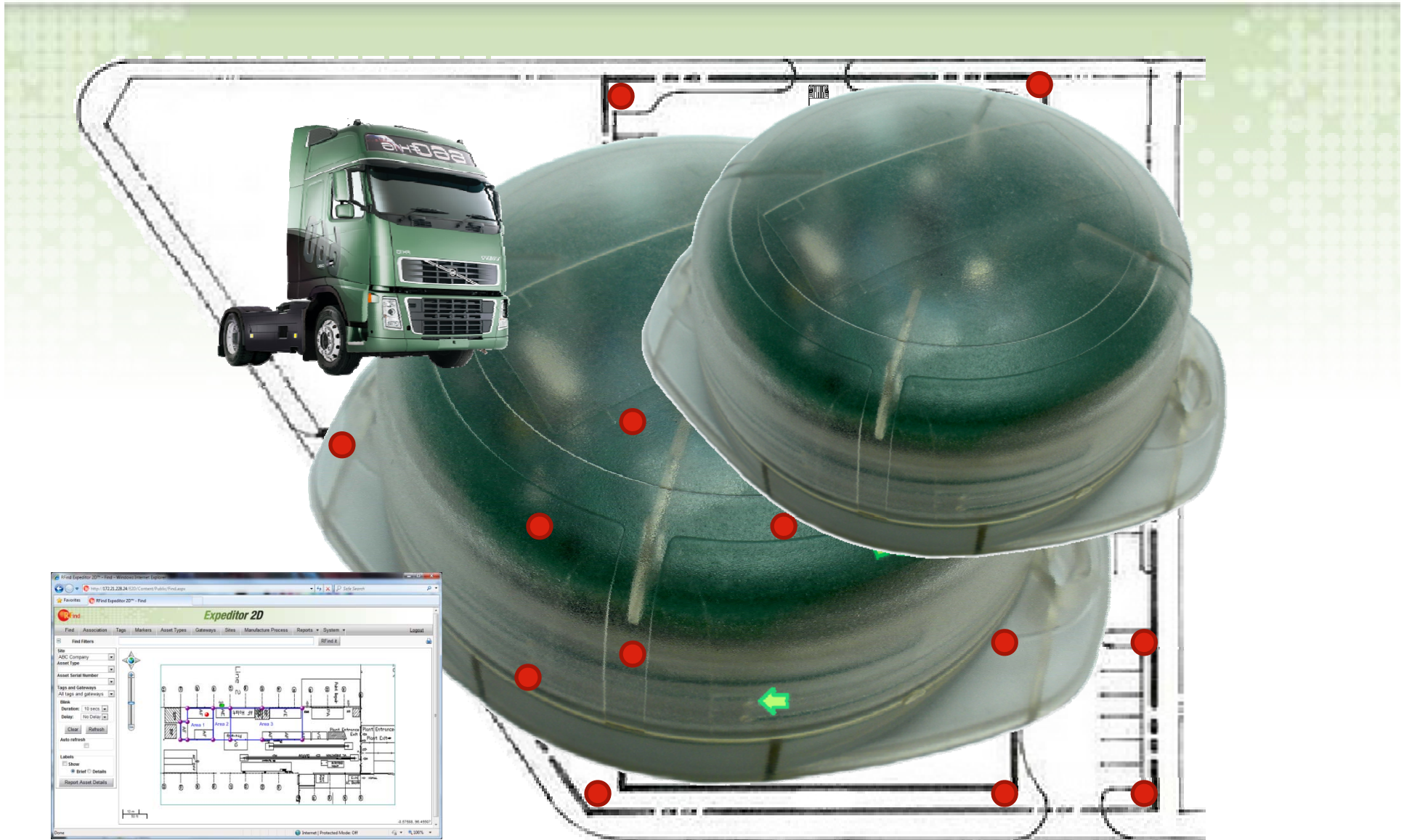
The Solution



Tag-to-Tag Communications



How Does it Work?



What Makes it Different?



- Pragmatic approach to locating to solve problems and improve process
 - Pliable
 - Flexible
 - Portable
 - Adaptable
 - Affordable
- Fit the solution to the problem!

Which Aluminum Coils are in the Warehouse?



Presence Detection

Through which door did the forklift go?



Chokepoints

Which job is in this work cell?



Point to Point Locating

Go Find Jeep #552129 for test?



X, Y Locating

Bringing it all Together



Mixed Locating

Typical challenges for RFind



- Yard management
- Warehouse and Finished Goods
- Manufacturing and process management
- Logistics
- Line replenishment
 - Actuator tag

RFind's Customers



- Major automobile manufacturers
 - Europe
 - United States
 - Mexico
- Major aluminum manufacturer
 - United States
- Major transit authority
 - Canada
- Major distribution company
 - Europe

Commonality in Platform



- Locating options
 - Presence only
 - Chokepoints
 - Point-to-point
 - X, Y
- Types of tags
 - RTLS
 - Active RFID
 - Actuator (push-button)
- Frequencies
 - 868/915 MHz
 - 433 MHz (DASH7)
- Additional Features
 - Replaceable batteries
 - User defined LEDs
 - Motion detection

What We Bring to the Table



- Hardware Only
- Hardware & a bit of Software
- The Full Meal Deal
 - Hardware
 - Software
 - Deployment
 - Project Management

Who We Really Are?



- Unique locating offering for challenging environment
- Pragmatic approach to problem solving
- Cost effective solution

The RFind Brag Wall



- 2006
 - New Ventures BC Winner
- 2007
 - Athabasca University – Rising Star Award Winner
 - Managing Automation Magazine – Top 10 Companies to Watch
 - Silicon Vineyard Awards – Innovator of the Year Finalist
 - Silicon Vineyard Awards – Most Promising Emerging Technology of the Year Finalist
- 2008
 - Top 25 Exporters in BC
 - Business in Vancouver Magazine – Top 40 Under 40
 - Rocket Builders – Ready to Rocket List
- 2009
 - Rocket Builders – Ready to Rocket List
 - Silicon Vineyard Awards – Innovator of the Year Finalist
 - Silicon Vineyard Awards – Innovative Organization of the Year Winner



Discussion



Contact Us

Suite#102, 2076 Enterprise Way | Kelowna, British Columbia | Canada V1Y 6H7

sales@rfind.com

<http://www.rfind.com>

250.862.3412