

An Overview of Odette and its activities

John Canvin
Managing Director

Contents

What is Odette ?

The Organisation

Annual Conference

Corporate Mission

- 1 - **Develop** European/Global **recommendations** for communication and collaboration between companies in the automotive industry
- 2 - **Promote** and co-ordinate industry-wide **implementation**

How it all started

- ❑ Established in May 1984
- ❑ Totally independent, not-for-profit organisation
- ❑ Designated by European auto industry to develop tools and recommendations with the aim of improving the flow of;
 - **information** about goods and business process data
 - **materials** in the supply chain and production
- ❑ Totally dependent on industry people like you.....

What are the benefits?

- The work of Odette supports the achievement of:
 - **'Fast to market'** – reduced development cycles
 - **'Fast to customer'** – reduced order to delivery times
 - **Cost reductions** – throughout the supply network
 - **Improved quality** - information and products

- **Networking** among industry peers.

What is Odette ?

The Organisation

Annual Conference

Odette Membership

National Organisations

- **United Kingdom**
- **Czech Republic**
- **France**
- **Germany**
- **Spain**
- **Sweden**

Associate National Members

- **Benelux**
- **Romania**
- **Turkey**

Associate IT Members

- **QAD**
- **Axway**



*Representing over 4500
companies in Europe*

Who is participating in Odette?

*Today there over **150** participants from*

- *15 European OEMs*
- *30 European Suppliers,*
- *plus 20 Solution providers*

Companies working in Odette.... from Germany

- ❑ Adam Opel
- ❑ Audi
- ❑ BMW
- ❑ Daimler
- ❑ Ford
- ❑ Volkswagen

- ❑ Behr
- ❑ Brose
- ❑ EDAG
- ❑ Fehrer
- ❑ Hella
- ❑ INA-Schaeffler
- ❑ Karmann
- ❑ Rasmussen
- ❑ Robert Bosch
- ❑ VDO Automotive
- ❑ SKF
- ❑ SupplyOn
- ❑ Webasto
- ❑ ZF

....from France

- ❑ PSA Peugeot Citroen
- ❑ Renault

- ❑ AB Industrie
- ❑ Dana
- ❑ Faurecia
- ❑ Glaverbel
- ❑ Hutchinson
- ❑ Michelin
- ❑ Rieter Automotive
- ❑ SNOP
- ❑ Treves
- ❑ Valeo

.....from Sweden

- Scania
- Volvo Cars
- AB Volvo

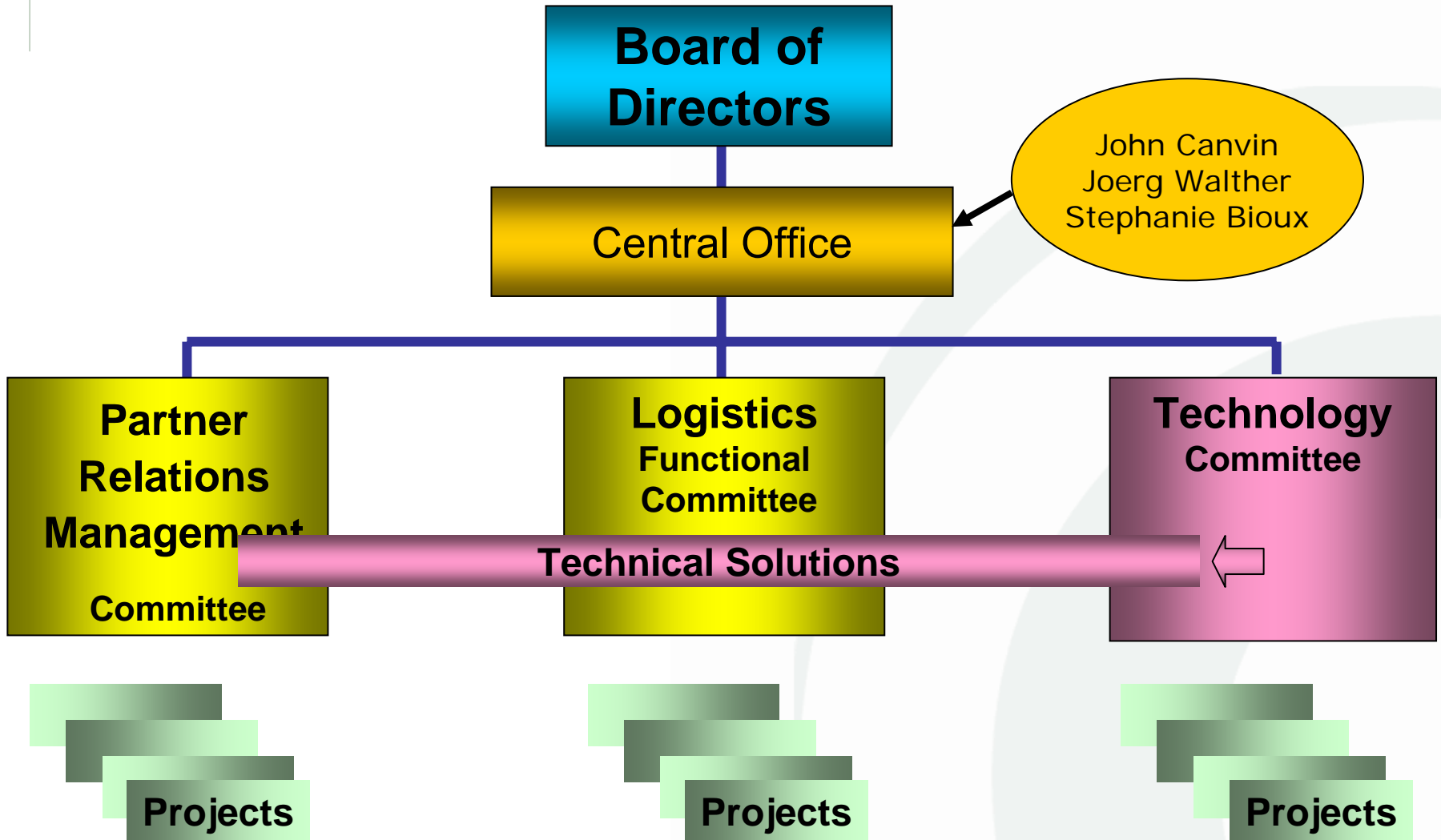
....and other countries

- Nissan Iberica & Nissan Europe
- SEAT
- Opel Espana
- Skoda
- Volvo Logistics
- Dacia

- Bamesa – Spain
- Grupo Antolin – Spain
- Lear – Spain

- Plus the National automotive Organisations;
 - ANFAC - Spain
 - GALIA - France
 - Odette Czech Republic
 - Odette Romania
 - Odette Sweden
 - SMMT/Industry Forum - UK
 - VDA - Germany
 - OSD - Turkey

European Structure



Logistics Functional Committee

- Supply Chain performance (including OEMs, Suppliers, Carriers and LSPs)
 - Assessment and evaluation
 - Maintenance and promotion
 - Key Performance Indicators (KPIs)
 - Logistics Agreement / Guidelines

- Logistics best practices

- Information Flow
 - Requirement specifications (Forecast, Call-off)
 - Delivery (ASN Message, Frequency, processes and documents to be used (Despatch Note etc...))
 - Engineering Change Management (EOP/SOP)

LFC continued

- Physical Flows
 - Packaging standardisation (CKD containers, cardboard boxes...)
 - Packaging management
 - Transport (Inbound flows of material and components)
 - Logistics services (e.g. storage, warehousing, cross-docking)
 - Long distance Supply Chain
 - Outbound transport
- Logistics Quality
 - Incident handling
 - Traceability

Partner Relations Management Committee

The PRMC is responsible for transversal information exchange processes between partners in the extended enterprise. This includes:

- ❑ Portal Management
- ❑ Reference Data Management
- ❑ Security Risk Management
- ❑ Collaboration Management

The scope of the PRMC excludes function specific process issues or technology issues dealt with by other Odette Committees.

International Co-operation and the JAIF

- Main industry players today are global

- Three key automotive regions working together:
 - Europe – **Odette**
 - North America – **AIAG, STAR**
 - Japan – **JAMA & JAPIA**

*Collectively referred to as the '**Joint Automotive Industry Forum**'*



Chronology of Success

- ❑ 1985 First unique **Odette EDI** messages
- ❑ 1986 **Bar-coded Transport Label** and **Odette FTP (OFTP)**
- ❑ 1989 Full **set** of **EDI** messages for logistics processes
- ❑ 1992 **Container Standards** and **ENGDAT** message for CAD
- ❑ 1996 First **UN/EDIFACT** message subsets
- ❑ 1997 Odette expands global links – **North America & Japan**
- ❑ 1998 **Logistics Evaluation** programme
- ❑ 2000 **CAD/CAM** data exchange recommendations
- ❑ 2001 **Board of Directors** established
- ❑ 2002 **Global Transport Label** - first result of true global co-operation
- ❑ 2003 **Global MMOG/Logistics Evaluation**
- ❑ 2004 **User & Access Management** in B2B Portals
- ❑ 2005 **Joint Automotive Data Model (JADM)**
- ❑ 2006 **RFID** starts
- ❑ 2007 the **JAIF** created and **OFTP2** released.....



What is Odette ?

The Organisation

Annual Conference

13th conference!

Odette Conference 2008

***“The Global Automotive
Community
Transcending Physical
Borders”***

21-21nd October

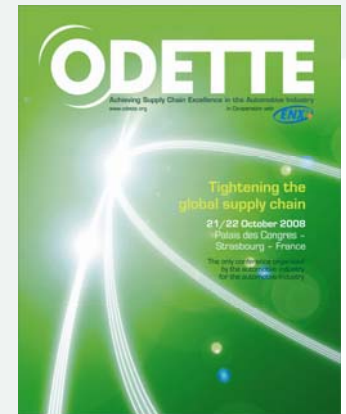
Strasbourg, France



Driving Times:
Munich: 3H30
Stuttgart: 1H30
Cologne: 3H30
Frankfurt: 2H00

What is the Odette Conference?

- Communication **showcase** not only for Odette but for the whole Automotive Industry
- More than **40 presentations** from OEMs and Suppliers
 - ✓ Strategic and operational
 - ✓ Supply Chain Management, Purchasing, Finance, IT, and B2B communications
- An **exhibition** of around 30 software and services providers
- **> 400 participants** every year from all over the world
 - ✓ Decision makers as well as implementers
 - ✓ Logistics / Engineering / IT
 - ✓ OEMs, 1st and 2nd Tier suppliers.



- ❑ **Optimising aftermarket logistics**
 - Anti-counterfeiting; VMI/CMI; OEM/Dealer Communication; Logistics Business Challenges in aftermarket
- ❑ **Meeting the Logistics Challenges of Emerging Markets**
 - OEMs; Suppliers; Logistics Service Providers Challenges
- ❑ **The Future of Bar Code Labelling**
 - Bar coding vs RFID; Problems and Restrictions of Labelling
- ❑ **Improving Logistics Quality**
 - Forecast Quality; KPIs for Carriers and LSPs Implementation;
- ❑ **The reality of RFID in the Auto Industry**
 - Update on standardisation; Optimising transport; Location systems; RFID in production systems; RFID and KANBAN



17th June 2008

- ❑ **Communication Protocols: Horses for Courses**
 - OFTP2 roll-out with ENGDAT; B2B in Emerging Markets; Protocol Comparisons; Security Certificate Exchanges
- ❑ **eInvoicing in the Schengen: Crossing borders without paper**
- ❑ **Traditional EDI: Refusing to lie down and die**
- ❑ **Partner Portal vs. EDI**



Also

- ❑ Interesting visit programme
- ❑ Evening Networking Event

- ❑ Registration opening shortly. Don't miss out on 40% early discount!
- ❑ A few exhibition stands still available!



info@odette.org

We appreciate your feedback

- Fill in the evaluation sheet at the end of the day for a chance to win a free ticket for the Conference!

For more details
see the website

www.odette.org